

GAMMAFERTIL

for Woman



Indications:

- Endocrine genesis female infertility
- Preparation of artificial insemination and fertilization
- Reduction of sexual desire (libido), frigidity in women
- Post-castration syndrome in women (after removal of genitals)
- Polycystic ovaries
- Fibrocystic mastopathy
- Pre-menstrual syndrome
- Menopause

Usage and dose

1-2 packets in a day

1 packet morning / 1 packet evening

Drug is completely dissolved in 1/2 cup of water and drink immediately



GAMMAFERTIL FOR WOMAN is a multicomponent biologically active agent. Empirically identified properties of the components that make it up, got their scientific evidence in numerous studies.

Active natural components of GAMMAFERTIL FOR WOMAN contribute:

- Increase sexual responsiveness in women;
- Ensuring high speed onset of action, longer duration of effect and increased orgasmic sensations;
- Increases development of estrogen hormones, improve sexual function, libido and other measures of sexual activity and reproductive ability in women;
- Positive impact on mental and physiological state of women who had undergone surgery to remove a variety of reproductive organs (e.g. uterus, ovaries, etc.);
- Reduction in the intensity and severity of symptoms developing during menopause or after surgical castration (e.g. after removal of the uterus and fibroids, etc.), such as insomnia, irritability, tension, etc.

RECOMMENDATIONS FOR USE:

1 pack 2 times a day, preferably with meals. Package contents dissolved in ½ cup water at room temperature . Drink immediately after dissolution. The optimal duration of administration - 12-16 weeks. Rates of admission can be repeated if necessary .

SIDE EFFECTS:

While receiving GAMMAFERTIL FOR WOMAN no side effects were observed.

CONTRAINDICATIONS:

Hypersensitivity to the components, pregnancy, lactation, severe diseases of the cardiovascular system expressed by human liver and kidney function , age under 18 years, a tendency to bleed.

STORAGE:

Store in a dry, protected from direct sunlight place, away from children, not above +25°C temperatures.

SHELF LIFE:

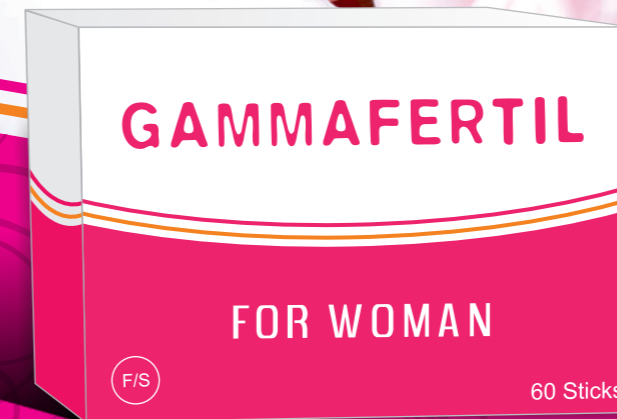
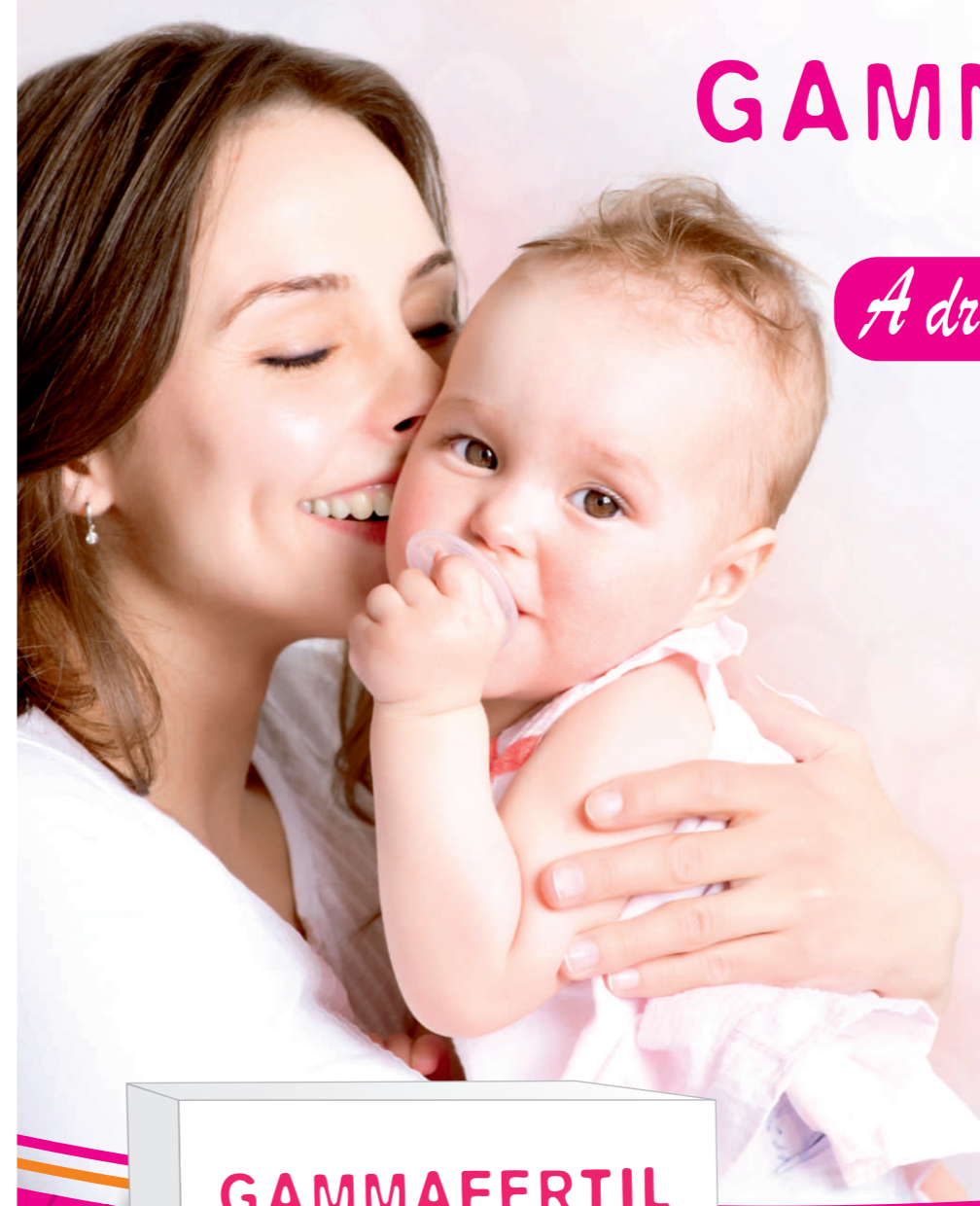
3 years. The expiration date described on every package.

Each carton package contains of 60 packs.

GAMMAFERTIL

for Woman

A dream to become a mother



PRODUCT of EUROPE

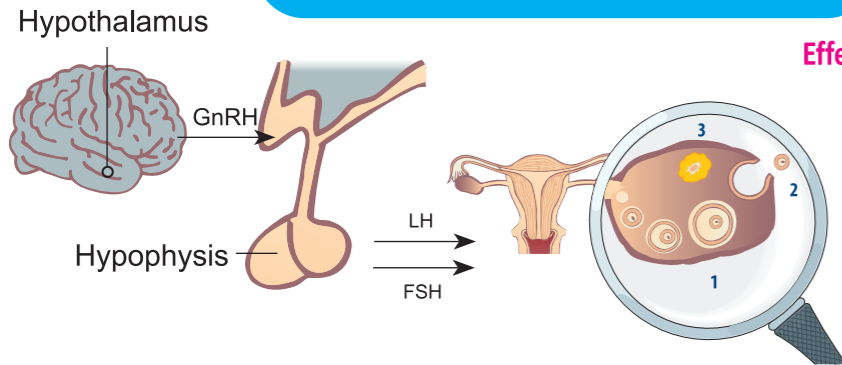
GRICAR * 01.10.1970 *
* CULT & CARE SINCE

GAMMAFERTIL

for Woman



Reproductive function of the woman



Effects of FSH and LH produced in hypophysis

- 1 follicle growth and oocyte maturation
- 2 lead to the beginning of ovulation
- 3 then suspends the development of corpus luteum

GnRH (gonadotropin-releasing hormone) -

gonadotropin releasing hormone inducing the anterior pituitary, stimulates the production of FSH and LH.

FSH and LH acts to ovary

-FSH in the first half of the menstrual cycle accelerates the development of the follicle, which has one follicle.

-LH in the middle of menstruation holds ovulation.



GAMMAFERTIL

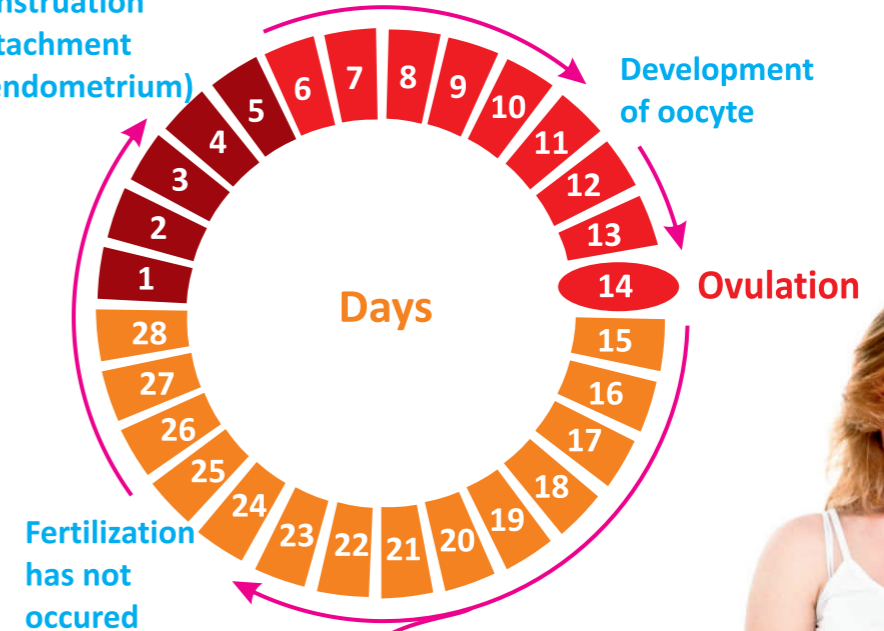
for Woman



Fases of menstrual cycle

Menstruation
(detachment
of endometrium)

Development
of oocyte



Fertilization
has not
occured

Fertilization

Pregnancy



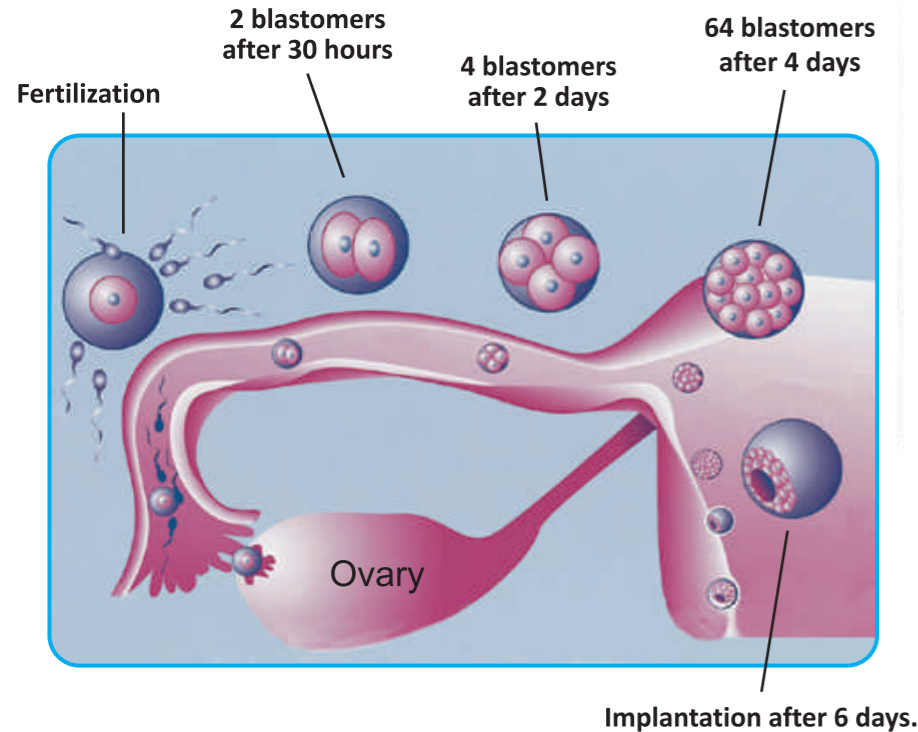
GAMMAFERTIL

for Woman



Fertilization

How occurs pregnancy?



During ovulation free egg enters to fallopian tubes. During sexual intercourse the sperm comes from the vagina into the uterus, and from there into the fallopian tubes. To the fertilization is involved only one sperm, nucleus which merges with the nucleus of the egg. From this moment of fertilization the pregnancy is initiated.



GAMMAFERTIL

for Woman



Causes of female infertility:

- disturbances in development of ovary
- hormone (hypothalamus, hypophysis, thyroid, epinephrine, ovary genesis) disturbances
- anatomical abnormalities of the uterus
- endometriosis
- polycystic ovary
- genetic disturbances
- idiopathic
- immunologic causes
- male infertility
- psychological causes



GAMMAFERTIL

for Woman



Components

GAMMAFERTIL

for Woman

Components

in one package

Components

in one package

Eleuterococco 500 mg

Tribulus terrestris 250 mg

Vitex agnus-castus 200 mg

Peruvian poppy 100 mg

Cimicifuga 40 mg

L-arginine 1000 mg

Vitamin C 500 mg

Magnesium 100 mg

Iron 27 mg

Vitamin E 36 mg

Zinc 12,5 mg

Vitamin B6 9,5 mg

Folic acid 0,4 mg

Iod 0,22 mg

Selenium 0,081 mg

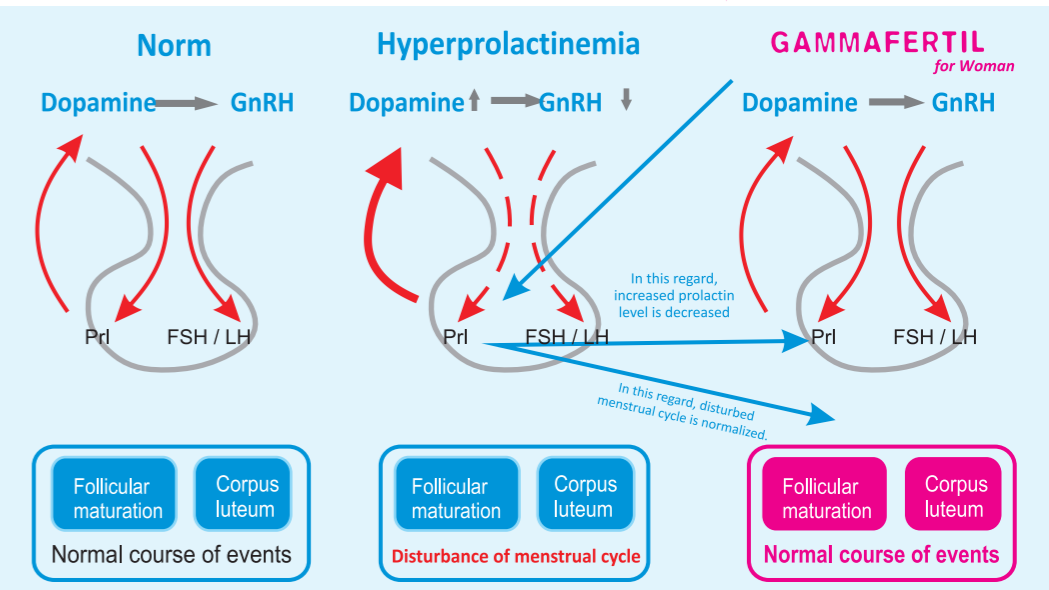
Vitamin B12 0,025 mg

GAMMAFERTIL

for Woman



The connection between prolactin secretion with gonadotropin-releasing hormone (GnRH) and gonadotropins (FSH and LH).



GAMMAFERTIL

for Woman

·Provides maturation of dominant follicle

·In women develop pregnancy

·Eliminates deficiency of vitamins and minerals in the body

·Hormonal balance is restored by the natural non-hormonal components

·Normalizes ovarian function

·Normalizes increased level of the prolactin

·Increases sexual desire in women